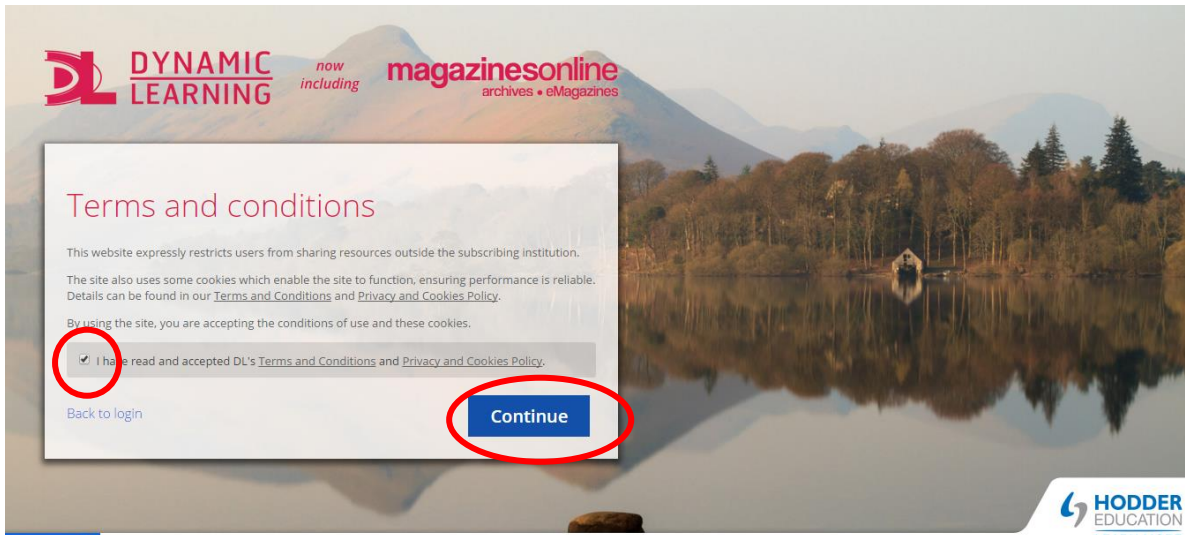
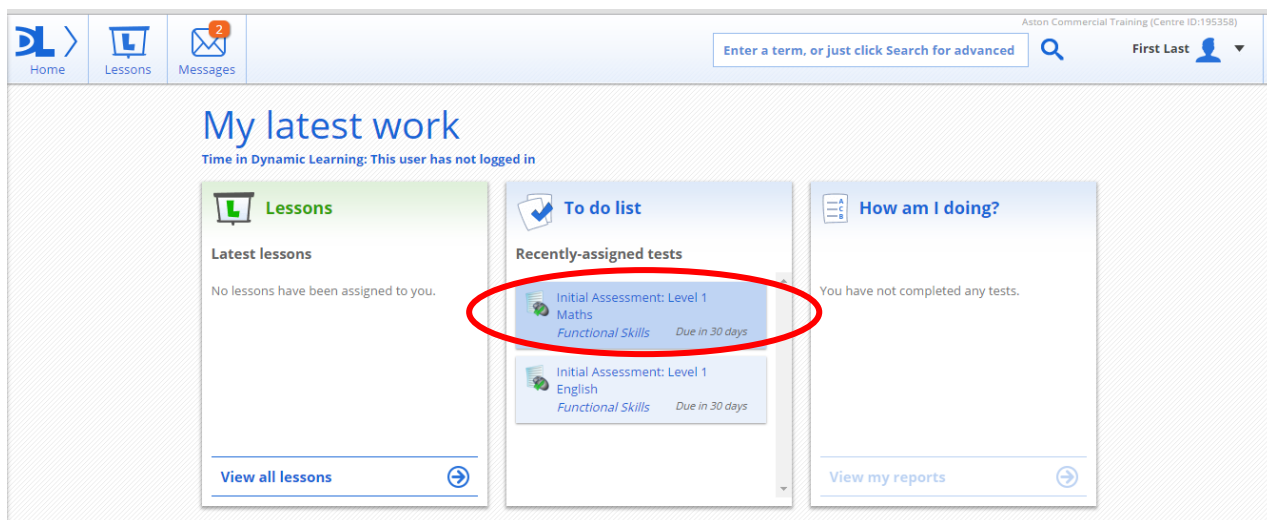


Candidate Handbook- Dynamic Learning

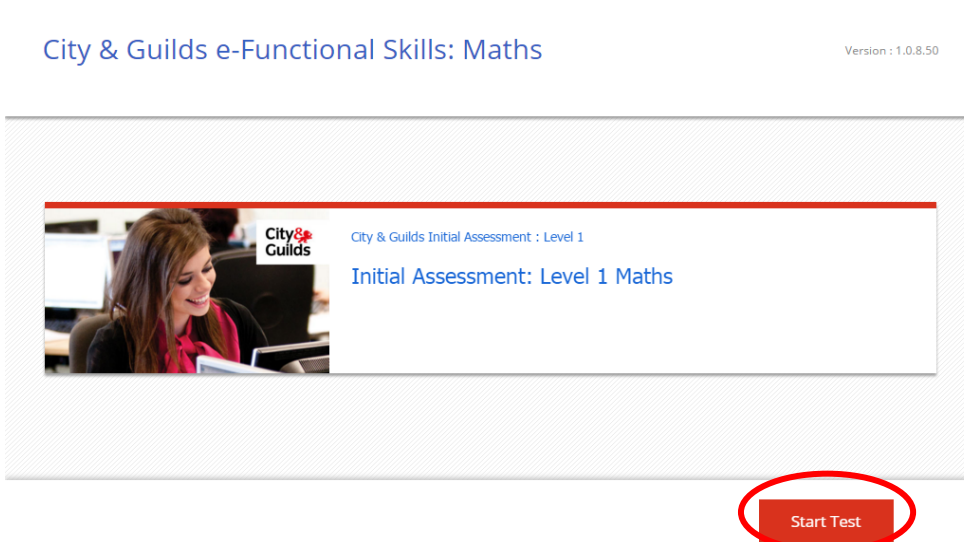
1. Type www.my.dynamic-learning.co.uk in to your search bar to access the Dynamic Learning site (this must be accessed via Google Chrome)
2. Enter the **Username** and **Password** provided by Aston, then enter the centre ID as **195358**.
3. Tick for Terms and Conditions once these have been read, then click **Continue**.



4. Select the first test in your **To Do List**.

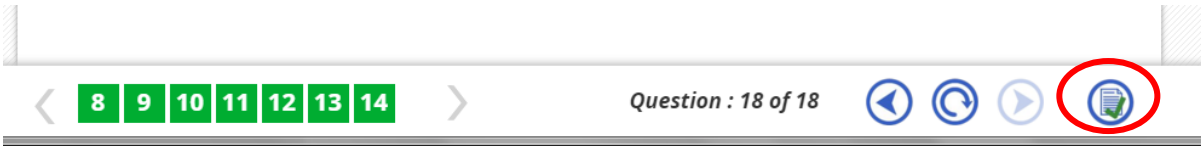


5. Click on **Start Test** to commence the initial assessment.

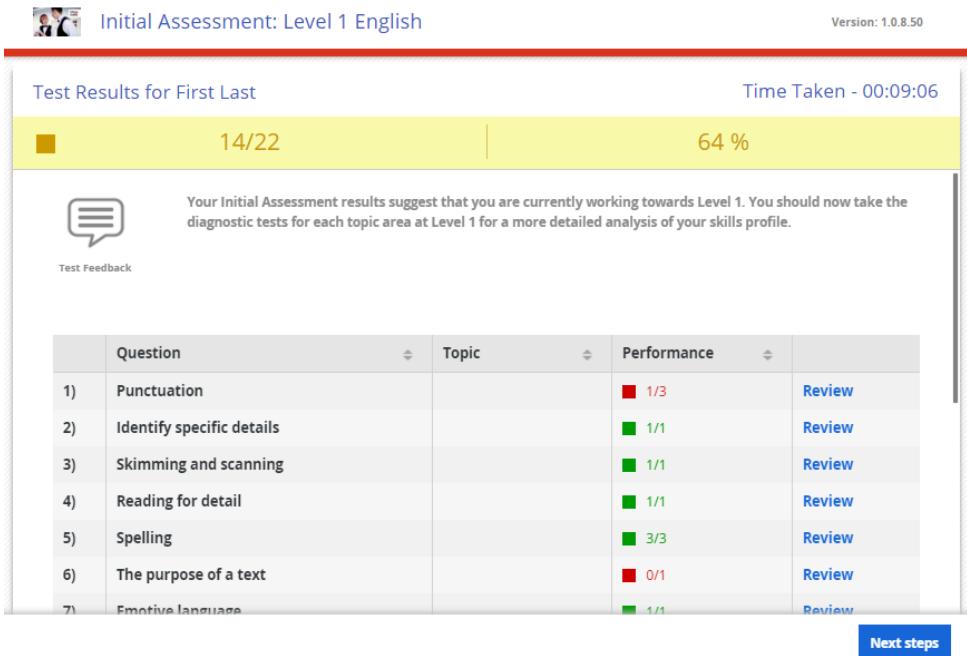


Candidate Handbook- Dynamic Learning

- Click on the **completed** button once all questions have been answered, the test will not allow you to finish unless an answer has been added to each question.



- This will then display a results screen where you can review your answers



Initial Assessment: Level 1 English Version: 1.0.8.50

Test Results for First Last Time Taken - 00:09:06

14/22 64 %

Your Initial Assessment results suggest that you are currently working towards Level 1. You should now take the diagnostic tests for each topic area at Level 1 for a more detailed analysis of your skills profile.

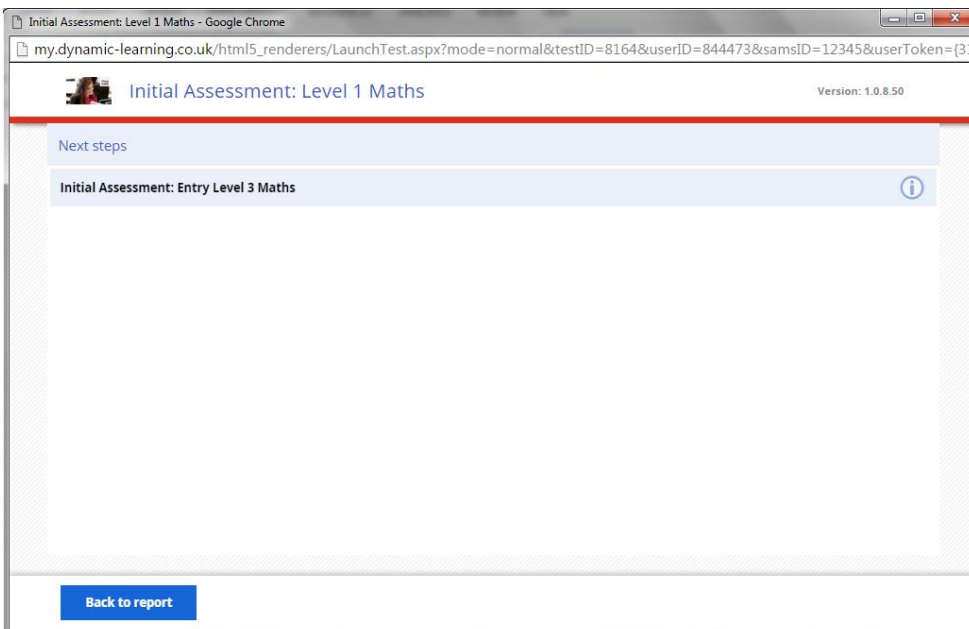
Test Feedback

	Question	Topic	Performance	
1)	Punctuation		1/3	Review
2)	Identify specific details		1/1	Review
3)	Skimming and scanning		1/1	Review
4)	Reading for detail		1/1	Review
5)	Spelling		3/3	Review
6)	The purpose of a text		0/1	Review
7)	Emotive language		1/1	Review

[Next steps](#)

- Select **Next Steps** (above) to show any further action to take, this may request for you to continue on to another Initial Assessment- if so, please click on **Initial Assessment** to continue the next task.

If the Next Steps show no Initial Assessment tests but shows **Diagnostics**- please Exit this page in the top right hand corner and **proceed to step 10** as access will be denied if you select the diagnostic tests.



Initial Assessment: Level 1 Maths Version: 1.0.8.50

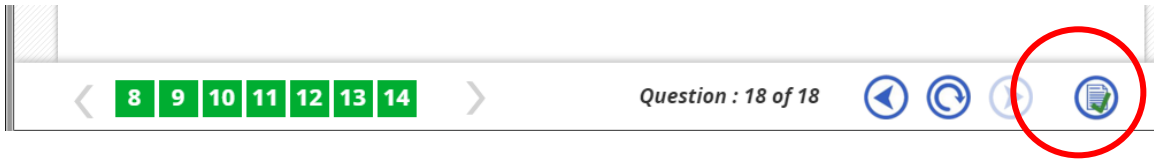
Next steps

[Initial Assessment: Entry Level 3 Maths](#)

[Back to report](#)

Candidate Handbook- Dynamic Learning

8 Please complete the questions again and then click on the complete button once all questions have been answered.



9 Once this section has been answered and there are no next steps to continue on to, exit from this screen in the top right hand corner.

A screenshot of a test results page titled 'Initial Assessment: Level 1 English'. The page shows 'Test Results for First Last' with a 'Time Taken - 00:09:06'. A progress bar indicates '14/22' questions completed, resulting in '64 %' score. Below this, a message states: 'Your Initial Assessment results suggest that you are currently working towards Level 1. You should now take the diagnostic tests for each topic area at Level 1 for a more detailed analysis of your skills profile.' A table lists the questions and performance:

	Question	Topic	Performance	
1)	Punctuation		1/3	Review
2)	Identify specific details		1/1	Review
3)	Skimming and scanning		1/1	Review
4)	Reading for detail		1/1	Review
5)	Spelling		3/3	Review
6)	The purpose of a text		0/1	Review
7)	Emotive language		1/1	Review

The close button (X) in the top right corner of the browser window is circled in red.

10. Please click on the [English Initial Assessment](#) in your To Do List and complete the same steps again

My latest work

Time in Dynamic Learning: 0 hours and 11 minutes

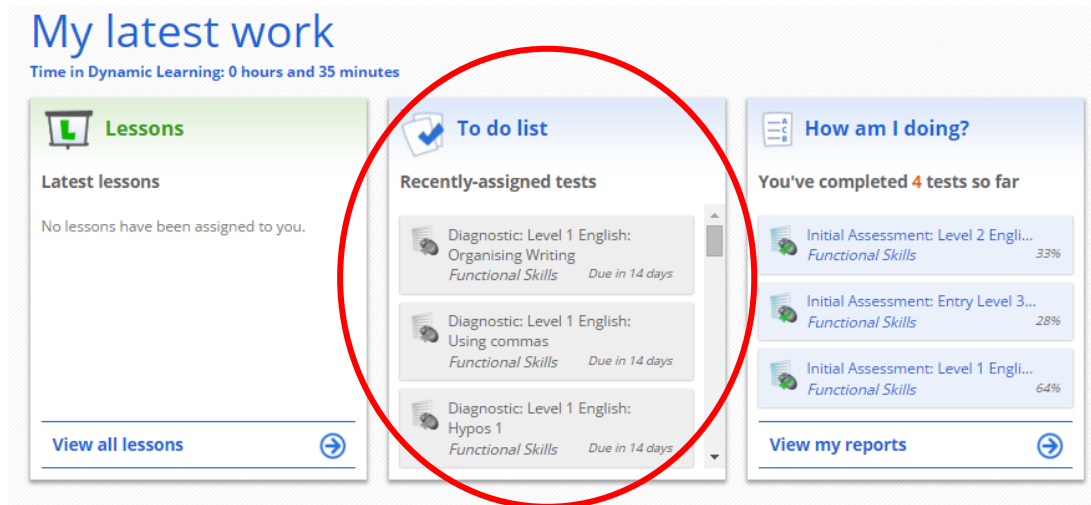
A screenshot of the 'My latest work' dashboard. It is divided into three main sections:

- Lessons:** Shows 'Latest lessons' with the message 'No lessons have been assigned to you.' and a 'View all lessons' button.
- To do list:** Shows 'Recently-assigned tests' with two items:
 - Initial Assessment: Entry Level 3 Maths (Functional Skills) Due in 14 days
 - Initial Assessment: Level 1 English (Functional Skills) Due in 30 days
- How am I doing?:** Shows 'You've completed 2 tests so far' with two items:
 - Initial Assessment: Level 1 Maths (Functional Skills) 6%
 - Initial Assessment: Entry Level 3... (Functional Skills) 28%

Each section has a 'View all...' button with a right-pointing arrow.

Candidate Handbook- Dynamic Learning

11. Once all **Initial Assessments** have been completed in your **To Do List**, you will notice that there are no more blue tests to complete in the task bar.



My latest work
Time in Dynamic Learning: 0 hours and 35 minutes

Lessons
Latest lessons
No lessons have been assigned to you.
[View all lessons](#)

To do list
Recently-assigned tests

- Diagnostic: Level 1 English: Organising Writing
Functional Skills Due in 14 days
- Diagnostic: Level 1 English: Using commas
Functional Skills Due in 14 days
- Diagnostic: Level 1 English: Hypos 1
Functional Skills Due in 14 days

How am I doing?
You've completed 4 tests so far

- Initial Assessment: Level 2 English: Functional Skills 33%
- Initial Assessment: Entry Level 3: Functional Skills 28%
- Initial Assessment: Level 1 English: Functional Skills 64%

[View my reports](#)

12. Please let your interviewer know so we can access your test reports.

Thank you